

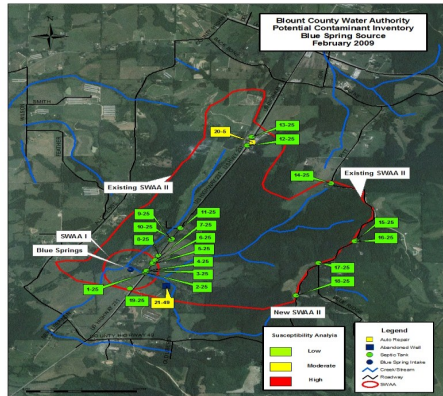
“Water & Wastewater Infrastructure “Asset Management”



Data provided at Sub Meter Accuracy

Data Collection Includes the location and age in most cases of:

- Valves
- Meters
- Manholes
- Lift Stations
- PRV's
- Hydrants
- and much more!



ARWA
2576 Bell Road
Montgomery, AL 36117

Phone: 334-396-5511
 Fax: 334-396-7090
 E-mail: arwa@alruralwater.com
www.alruralwater.com



Asset Management

“Providing accurate inventories of utility assets utilizing “State of the Art” GPS Equipment & Sophisticated GIS Software”



Tel: 334-396-5511



Affordable Asset Management for Utilities

Are You Tracking the Age and Replacement Needs of Your Current Assets?

Critical Asset Management

Let the Alabama Rural Water Association (ARWA) help you manage your utility's critical assets in the field. Utilizing "State of the Art" GPS Equipment and the latest in GIS Software, the ARWA can create a database inventory of all of your critical assets which will allow you to track the age, in most cases of your critical components, to make replacement cost projections, and to better manage your utility with the utmost efficiency.



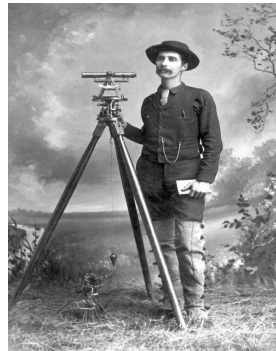
The ARWA has personnel with over ten years experience in data collection and management.

ARWA services will not be rendered by a licensed surveyor. The ARWA does not offer this service as a licensed surveyor or professional engineer.

ARWA

2576 Bell Road
Montgomery, AL 36117

Phone: 334-396-5511
Fax: 334-396-7090
E-mail: arwa@alruralwater.com
www.alruralwater.com



Don't Settle for Old Out-dated Maps!

How Accurate Are Your Utilities Records and Maps? When Were They Last Updated?

Get Organized and Manage Inventory Effectively

The ARWA Can provide Your Utility with:

- Complete Critical Component Information**
- Accurate Paper Maps**
- Map Books**
- Electronic Data**
- GIS Data Viewer**
- Data Updates**
- Data Maintenance**
- Accurate Inventory**



What is GIS and why is it important?

A geographic information system (GIS) integrates hardware, software, and data for capturing, managing, analyzing, and displaying all forms of geographically referenced information.

GIS allows us to view, understand, question, interpret, and visualize data in many ways that reveal relationships, patterns, and trends in the form of maps, globes, reports, and charts.

It organizes your information so that management can more effectively manage.

